

# KOMATSU GENUINE FILTERS

## FUEL FILTER

- Dual Filter Media
- Larger Filtration Area
- Efficient Filtration

More than 85% failures in Fuel Injection System are due to water and dust



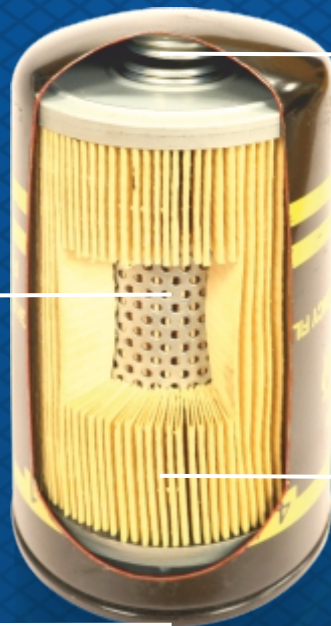
- Fuel Pre-Filter separates water & filters dust particulates upto 10  $\mu\text{m}$

- Fuel Main filter removes microscopic dirt upto 2 $\mu\text{m}$  and keeps fuel clean

**Dual Filter Media**  
Higher Filtration Efficiency



**Suitable Rib Design**  
Higher Strength



**Stronger Spring Coil with Plating**  
Optimum Sealing & Corrosion Resistant



**More Number of Pleats**  
Larger Filtration Area



\*Above depiction is applicable for specific Komatsu machines



Improves Engine Performance



Reduces Operating Cost

**IT PAYS TO INSIST ON GENUINE PARTS**

# KOMATSU GENUINE FILTERS

## ENGINE OIL FILTER

- Combination Filter
- Three Layered Filter Media
- Efficient Filtration

Majority of engine failures are due to contamination and sludge

Engine oil filter is specially designed to supply clean oil after retaining contaminants, sludge and moisture.

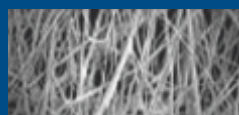
### Three Layers of Filtration - Fibre Glass Media



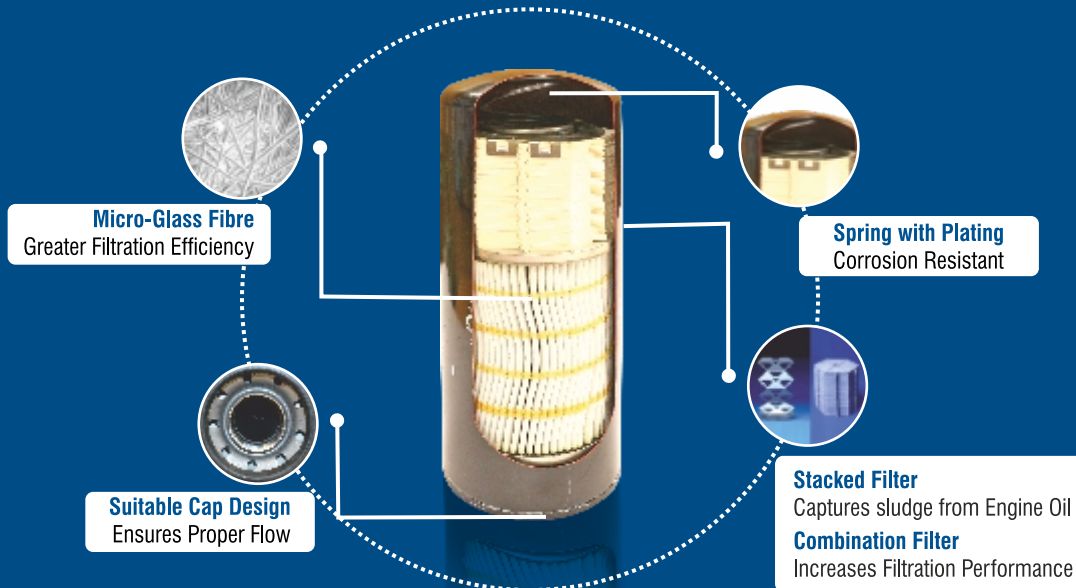
Coarse layer



Middle layer



Fine layer



Improves Engine Performance

Reduces Operating Cost



**L&T Construction & Mining Machinery**

Larsen & Toubro Limited

1<sup>st</sup> Floor Lakshminarayan Complex, 10/1 Palace Road, Bengaluru- 560 052  
Tel: (080) 40401700

Visit: [www.Lntcmb.com](http://www.Lntcmb.com)



L&T Construction & Mining Machinery



[Larsentoubro.cmb](https://www.larsentoubro.com)

Reach us on - 1800 833 9990



## KOMATSU GENUINE FILTERS

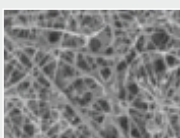
### Hydraulic Filter

- Filter Media - Nano Fibre Technology
- Designed with High Filter Fabrication Integrity - Inner tube & Wire mesh

More than 70% failures in hydraulic system are due to dust and contamination.

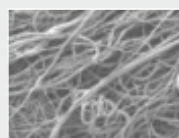
- Hydraulic filter is specially designed to capture dust & wear particles
- Protects machine against contamination
- Enhances life of hydraulic components

#### Glass Fibre



Diameter of fibre 0.8-3.0µm  
Filtration ability 1-30µm  
Thickness of fibre 0.2-0.5mm

#### Resin Nano Fibre



Diameter of fibre 0.5- 20µm  
Filtration ability 0.5-20µm  
Thickness of fibre 0.5-0.8mm

+



Hydraulic oil change period - 5000 hours



Improves Performance



Reduces Operating Cost

**IT PAYS TO INSIST ON GENUINE PARTS**

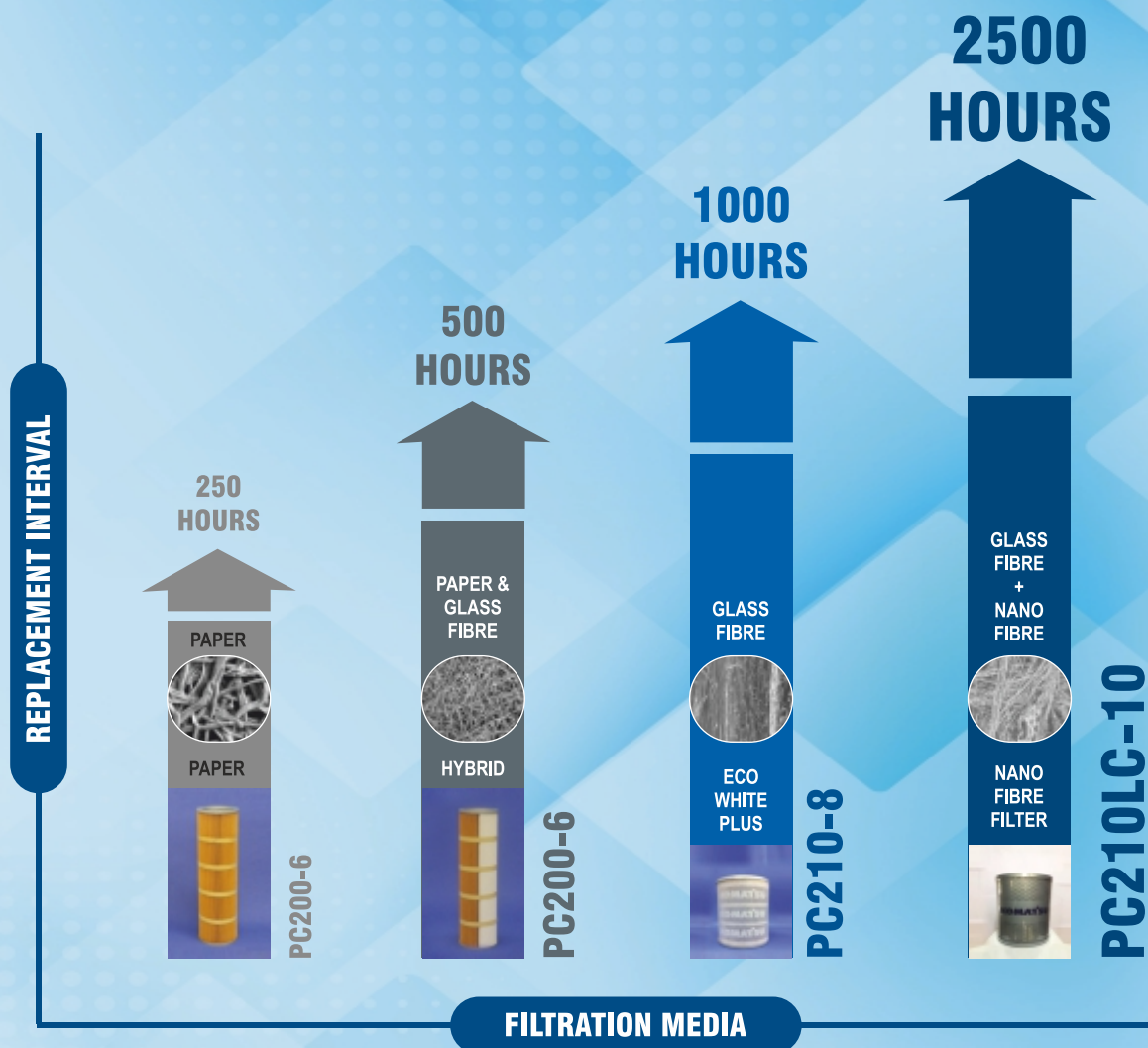
# Innovation in Filtration

Filter media is upgraded to a mix of glass fibre & resin nano fibre

- ▶ Higher dust capture capacity per unit area
- ▶ Increase in filtration area

**Enhanced Filtration Efficiency**

**Extended Replacement Interval**



**L&T Construction & Mining Machinery**

**Larsen & Toubro Limited**

1<sup>st</sup> Floor Lakshminarayan Complex, 10/1 Palace Road, Bengaluru- 560 052  
Tel: (080) 40401700

Visit: [www.Lntcmb.com](http://www.Lntcmb.com)



L&T Construction & Mining Machinery



[Larsentoubro.cmb](http://Larsentoubro.cmb)

Reach us on - 1800 833 9990